

# DATA ROLES: THE DIFFERENCE

## DATA ANALYST



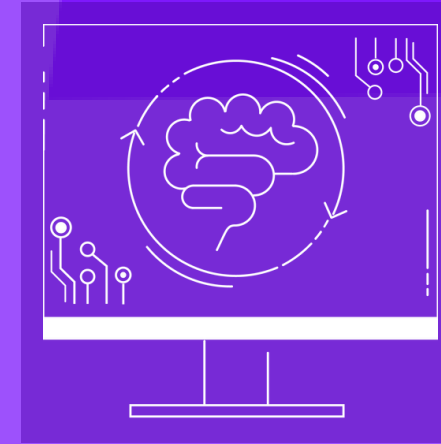
- Work in the past
- Sort data
- More specific and concentrated than data science because they sort data, rather than look for connections

## DATA ENGINEER



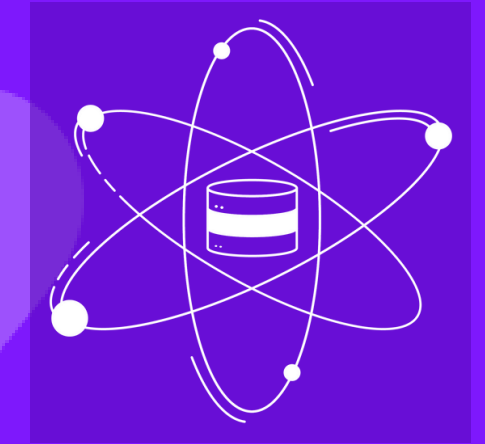
- Work in the present
- Collect data
- Support data scientists and analysts, providing the infrastructure used to deliver end-to-end solutions

## MACHINE LEARNING ENGINEER



- Work in the present
- Create programmes
- Bridge the gap between the model-building work of data scientists and the building of product-ready ML systems

## DATA SCIENTIST



- Work in the future
- Build connections
- Focused on advanced mathematical and statistical analysis on data generated by analysts and engineers